

SIRENUSE, OR HOW TO SAIL WITH ELEGANCE



SIRENUSE, ANDREYALE 16.20m, was built in 2006 by the Latitude 46 shipyard in Saint Martin de Ré and represents an outstanding example of French naval craftsmanship. With its classic lines and elegant design, this yacht embodies luxury and refinement.

Designed by renowned naval architects Joubert / Nivelte, the Andreyale was inspired by the American commuters of the 1920s, that transported Wall Street businesspeople from their homes in Connecticut or the Hamptons to avoid the city traffic.

Measuring 16.20 meters in length, SIRENUSE offers generous space for entertaining guests and enjoying life at sea. The furnishings, in the spirit of the 1930s, combine mahogany, teak and copper. Particular attention is paid to detail, offering optimal comfort for cruising in the utmost comfort. The superstructures are built of varnished mahogany in the purest tradition of marine carpenters.

Built in strip planking, red cedar, and epoxy, and coated with a layer of glass/epoxy fabric for protection, this classic yacht of incomparable aesthetics, perfectly balanced, with three cabins and three bathrooms with WC, is perfect for touring the Mediterranean with family or friends.

Equipped with powerful engines, this yacht offers exceptional performance at sea, while ensuring smooth, pleasant sailing at 18 kn.

Narrow in relation to their length, Andreyales displace little water, saving energy and ensuring long autonomy.

PRICE 420.000 € VAT PAID

Visits by appointment in Sète - France

KEY FEATURES

- First owner
- The only Andreyale with 16,20m length
- Professional captain since launch
- Exceptional condition
- Two engines NANNI 305 Hp - 1980 h (2012)
- Speed cruising/max 18/25kn.
- Bow thruster, electric
- Generator 7 KW - 460 hours
- Aft swimming platform sst/Teak

MAIN CHARACTERISTICS

Builder	LATITUDE 46	Engines	2 x NANNI 305 hp (2012)
Naval architect	Joubert / Nivelte	Propellers	4 blades
Year of construction	2006	Bow thruster	SIDE POWER
LOA	16.20 m	Cruising speed/ max	18/25 n
Beam	3.50 m	Diesel tank	2 x 1 000 l
Draft	1.20 m	Fresh water tank	350 l
Displacement	10 t	Black water tank	100 l

6 guests in 3 double cabins with ensuite bathroom and head

2 guests in convertible saloon double bed

EQUIPEMENT

Propulsion

2 NANNI 305 HP diesel engines, 2012 (1980 h)

2 four-blade propellers

Electric bow thruster SIDE POWER

Steering wheel with hydraulic transmission

Electronics / Navigation instruments

VHF with inside and outside speaker FURUNO

Iridium telephone

FURUNO 2023 radar

Autopilot

GPS

Electronic charts

Magnetic compass

Deck floodlight

Electric fog horns

Windshield wipers

Galley

2 x 95 l refrigerators

Induction hob

Electric oven

Dishwasher

Comfort

Diesel forced air heating

Electric and heat exchanger water heater 80 l

2 electric toilets, 1 manual

Ice maker in cockpit

Electricity

ONAN 7 KVA generator - 2023 (460 h)

3 x 12 V service batteries 225 Ah

2 x 12 V starter batteries 168 Ah

12/220 V MASTERVOLT 2,000 W converter

220/12V 80 Ah battery charger

220/12V 5 Ah battery charger

Deck

Stainless steel deck hatches

Quick electric windlass

Central cockpit sprayhood and Bimini

Stainless steel anchor chain and anchor

Mahogany and teak tables and chairs

Chrome air vents for all compartments

Classic mahogany dinghy, clinker planking on davits

4 hp outboard motor

Stainless steel and teak fixed aft bathing platform



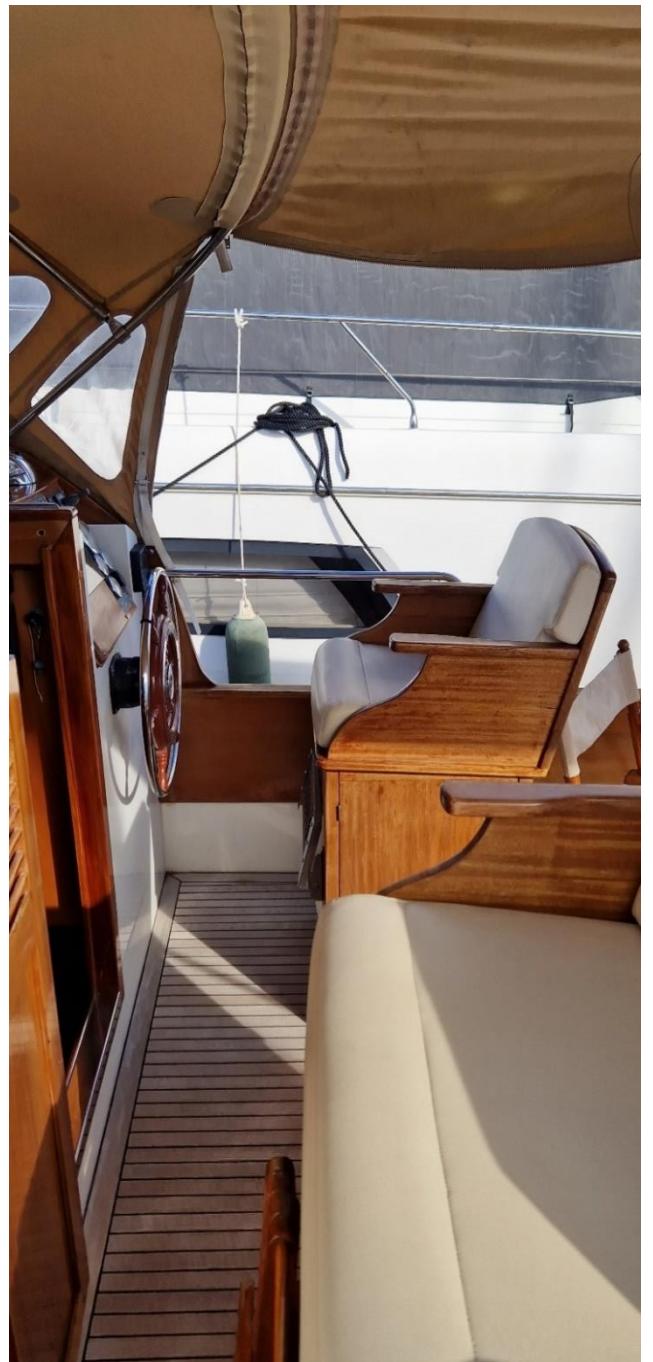
PICTURES TAKEN OCTOBER 28th, 2023

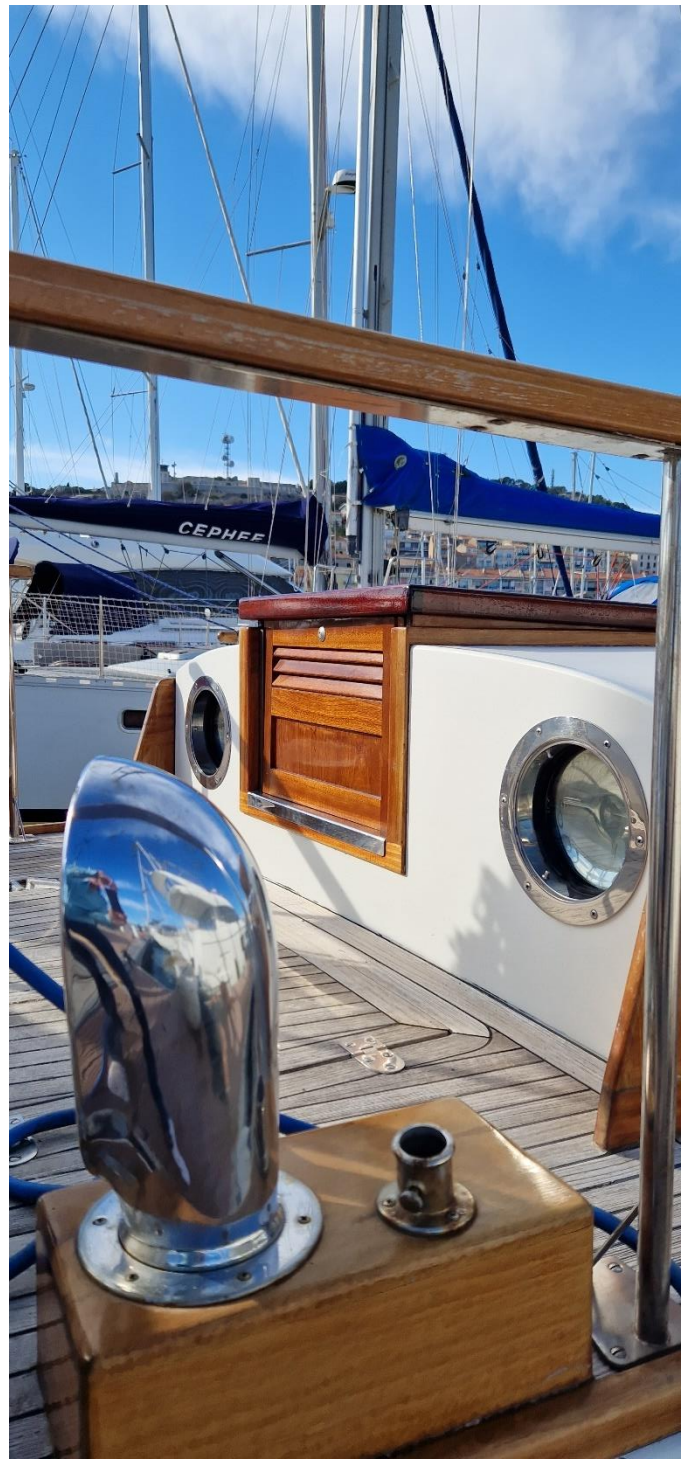












SALON



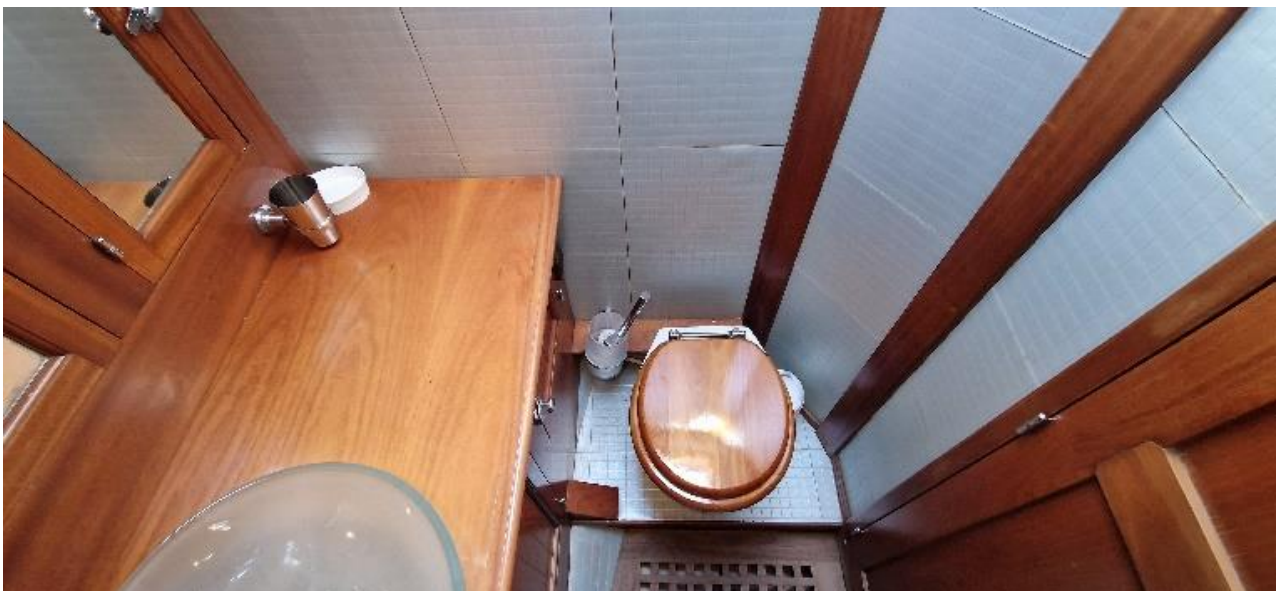
GALLEY



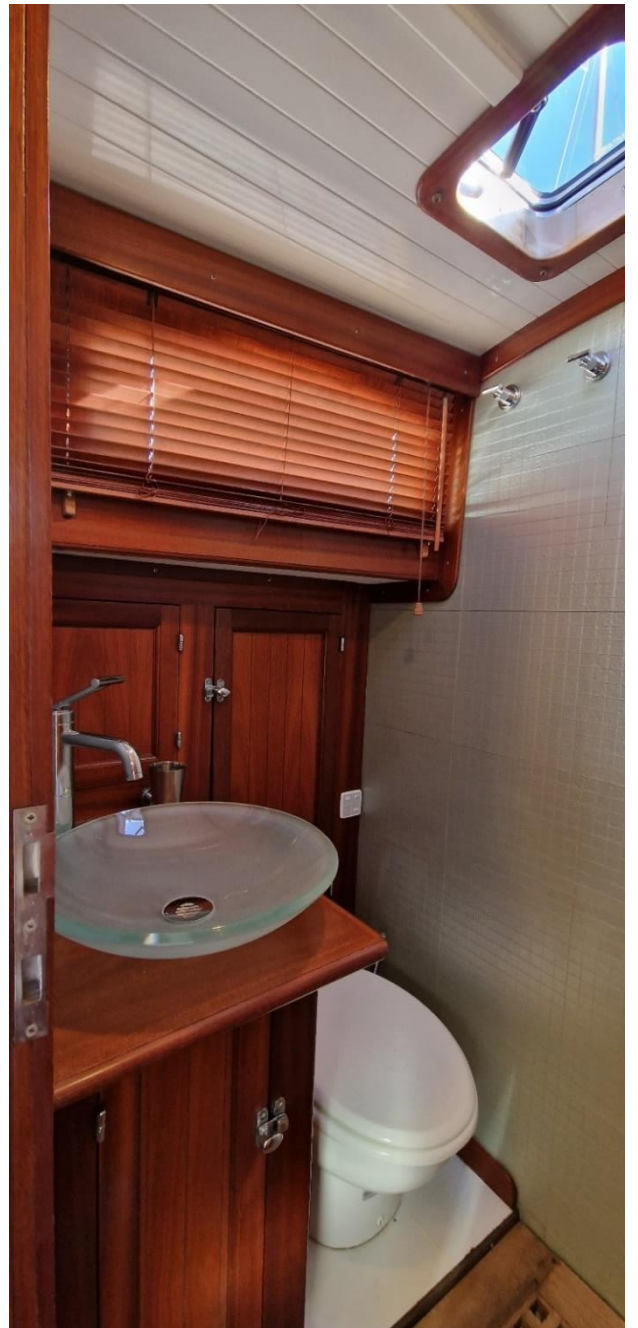


FORWARD DOUBLE CABIN





MIDSHIP DOUBLE CABIN



CABINE DOUBLE ARRIERE



ENGINE ROOM

