

# CNB 87' – 1990 - ARCHIMEDES



This CNB 87' is a large luxury sailing yacht, delivered in 1990.

Design by the famous naval architect German Frers, built in aluminium by the French superyacht builder CNB to a spacious and luxurious interior, she was refitted in 2016 and 2022. A sophisticated interior in teak wood has large windows allowing daylight to abundantly flood in.

She comfortably accommodates up to 6 guests in 3 en-suite staterooms. Space for 4 crew members in 2 twin cabins and 1 bathroom aft.

The splendid deck areas aboard this CNB 87 ketch-rigged sailing yacht provide ample room for sunbathing, al fresco dining and relaxation.

Sailing on engine, power comes from a Mercedes 280Hp diesel engine with a folding propeller. With 365m<sup>2</sup> sail area, performance under sails is remarkable.

Although the yacht was built to Bureau Veritas rules, she is now a private sailboat, perfect for long range cruising and charter as well, very well maintained by permanent crew.

**ASKING PRICE: 825,000 € VAT not paid**

**Location: South Turkey**

**Year built: 1990**

**LAFOURCADE/YACHT BROKER**

+33 680 593 873 - [o.lafourcade@yachtbroker.fr](mailto:o.lafourcade@yachtbroker.fr) - [www.yachtbroker.fr](http://www.yachtbroker.fr)

## MAIN CHARACTERISTICS

Length overall:	26.50 m / 87'
Beam:	6.80 m / 22'8
Draught:	3.10 m / 10'4
Air draft:	33.50 m
Guests:	6 in 3 cabins (Owner + 2 guests)
Crew:	4 in two cabins
Keel:	Fixed
Builder:	CNB
Designer:	German Frers
Dates of launching:	1990
Refits:	2016 / 2022
Flag:	Turkey
Class:	Hull and deck built under "BUREAU VERITAS" rules
Status:	Pleasure Yacht
Displacement:	85 t / 187,000 Lb
Construction:	Hull & Deck in Aluminium

## 2022 REFIT MAIN ITEMS LIST

- ✓ New hull paint (Awlgrip flag blue)
- ✓ New Deck paint (Awlgrip snow white)
- ✓ New Antifouling (international black)
- ✓ New air conditioning system
- ✓ Engine refit + new paint
- ✓ Bow thruster refit
- ✓ New refrigerator system
- ✓ All new deck hatches
- ✓ New kitchen lockers and setup
- ✓ New deck upholsteries + covers
- ✓ New interior upholsteries + covers
- ✓ New Biminis + sprayhoods
- ✓ New curtains and blinds for hatches
- ✓ New carpet
- ✓ New battery pack
- ✓ New safe x 2
- ✓ Maintenance of life rafts
- ✓ New B&G system
- ✓ New Raymarine VHF system
- ✓ New teak deck in **2016**

## SPECIFICATION

### ACCOMMODATIONS

From forward to amidship:

- 1 owner's cabin with ensuite bathroom and WC.
- 1 guest cabin starboard side with ensuite bathroom and WC

From amidship to aft:

- Saloon + Dining room
- 1 guest cabin with twin beds with ensuite bathroom and WC
- Galley
- Navigation room
- 2 twin crew cabins with 1 bathroom and 1 WC.

### RIGGING:

Main mast:	SPARCRAFT aluminium
Boom:	SPARCRAFT aluminium
Mizen mast:	SPARCRAFT aluminium
Standing rigging:	Rod
Running rigging:	Polyester / Spectra / Vectran
Genoa furler:	Hydraulic
Stail sail furler:	Manual
Boomvangs:	Hydraulic NAVTEC
Backstay:	Hydraulic NAVTEC

### SAILS:

Total sail area upwind:	354 m <sup>2</sup>
Mainsail:	122 m <sup>2</sup> / Dacron
Mizen:	59 m <sup>2</sup> / Dacron
Yankee:	117 m <sup>2</sup> / Dacron
Staysail:	56 m <sup>2</sup> / Dacron
Spinnaker	

### DECK:

Deck	Teak
Winches:	8 x hydraulic Lewmar 11 x manual Lewmar
Helms:	1 steering station
Steering system:	Chain + Cables

### MECHANICS:

Main engine:	Mercedes 280 HP (Refitted 2020) <b>7 465 h</b>
Transmission:	Direct shaft

Propeller: 3 blades folding  
Bow thruster: 35 hp hydraulic  
Hydraulic: Power pack 9 functions, twin motors, 24 V  
Main engine driven Bow Thruster Hydraulic pump

#### **TANKAGE:**

Fuel tanks: 3,700 l  
  
Fresh water tanks: 4,500 l  
Grey & black water tanks: 350 l

#### **ELECTRICITY EQUIPMENT:**

Generator: 27 kw / CUMMINS ONAN (2016) **15 330 h**  
Battery charger 1: 100 Amp / VICTRON  
Battery charger 2: 100 Amp / VICTRON  
Inverter 24V/220V 1: 3,000 V/A / VICTRON (2021)  
Inverter 24V/220V 2: 3,000 V/A / VICTRON (2021)  
Service batteries: 1200 Ah / 24 Volts /2022  
Engine batteries: 2 x 12 V 180 Ah  
Genset batteries: 1 x 12 V 120Ah

#### **NAVIGATION EQUIPMENT:**

Magnetic compasses: 1 x RICHIE + 2 Plastimo  
Navigation pack: B&G (2022)  
GPS  
Chart plotter  
Radar  
Autopilot  
Depth sounder

#### **COMMUNICATIONS EQUIPMENT:**

VHF: RAYMARINE

#### **MOORING EQUIPMENT:**

Windlass: Electric 24 V  
Anchor: 85 kg / CQR  
Chain: 120 metres of 14 mm galvanised chain

#### **MAIN EXTERIOR EQUIPMENT:**

Aft swimming platform: Hydraulic  
Shore power plug: 2 x 220V single phase

#### **MAIN INTERIOR EQUIPMENT:**

Air conditioning: EMERSON reverse cycle new 2022  
Water maker: SEAMAR 350 l/h  
Boiler 1: 100 liters / 2000 w

Boiler 2: 100 liters / 2000 w  
Toilets: 4 x electric

**GALLEY EQUIPMENT:**

Stove (3 gaz burners, one electric)  
Oven  
Microwave  
Extractor  
Fridge  
Deep freezer  
Dishwasher  
Laundry washer/Dryer  
Saloon fridge

**SAFETY EQUIPMENT:**

2 safes  
Fire alarm system  
Water alarm system  
Extinguishers  
Bilge pump + ~~fire pump~~  
Life rafts 2 x 6 pax  
Life jackets  
Horn  
Barometer

**OTHER EQUIPMENT:**

Tender: 4.2 m ZODIAC with 60 hp outboard engine + console (2016)

**ENTERTAINMENT EQUIPMENT:**

Main saloon: TV + Apple TV Bluetooth amplifier  
Owner cabin: Bluetooth amplifier  
Guest cabin 1: Bluetooth amplifier  
Guest cabin 1: Bluetooth amplifier



LAFOURCADE/YACHT BROKER

+33 680 593 873 - [o.lafourcade@yachtbroker.fr](mailto:o.lafourcade@yachtbroker.fr) - [www.yachtbroker.fr](http://www.yachtbroker.fr)



**LAFOURCADE/YACHT BROKER**

+33 680 593 873 - [o.lafourcade@yachtbroker.fr](mailto:o.lafourcade@yachtbroker.fr) - [www.yachtbroker.fr](http://www.yachtbroker.fr)



LAFOURCADE/YACHT BROKER

+33 680 593 873 - [o.lafourcade@yachtbroker.fr](mailto:o.lafourcade@yachtbroker.fr) - [www.yachtbroker.fr](http://www.yachtbroker.fr)





**LAFOURCADE/YACHT BROKER**

+33 680 593 873 - [o.lafourcade@yachtbroker.fr](mailto:o.lafourcade@yachtbroker.fr) - [www.yachtbroker.fr](http://www.yachtbroker.fr)



LAFOURCADE/YACHT BROKER

+33 680 593 873 - [o.lafourcade@yachtbroker.fr](mailto:o.lafourcade@yachtbroker.fr) - [www.yachtbroker.fr](http://www.yachtbroker.fr)



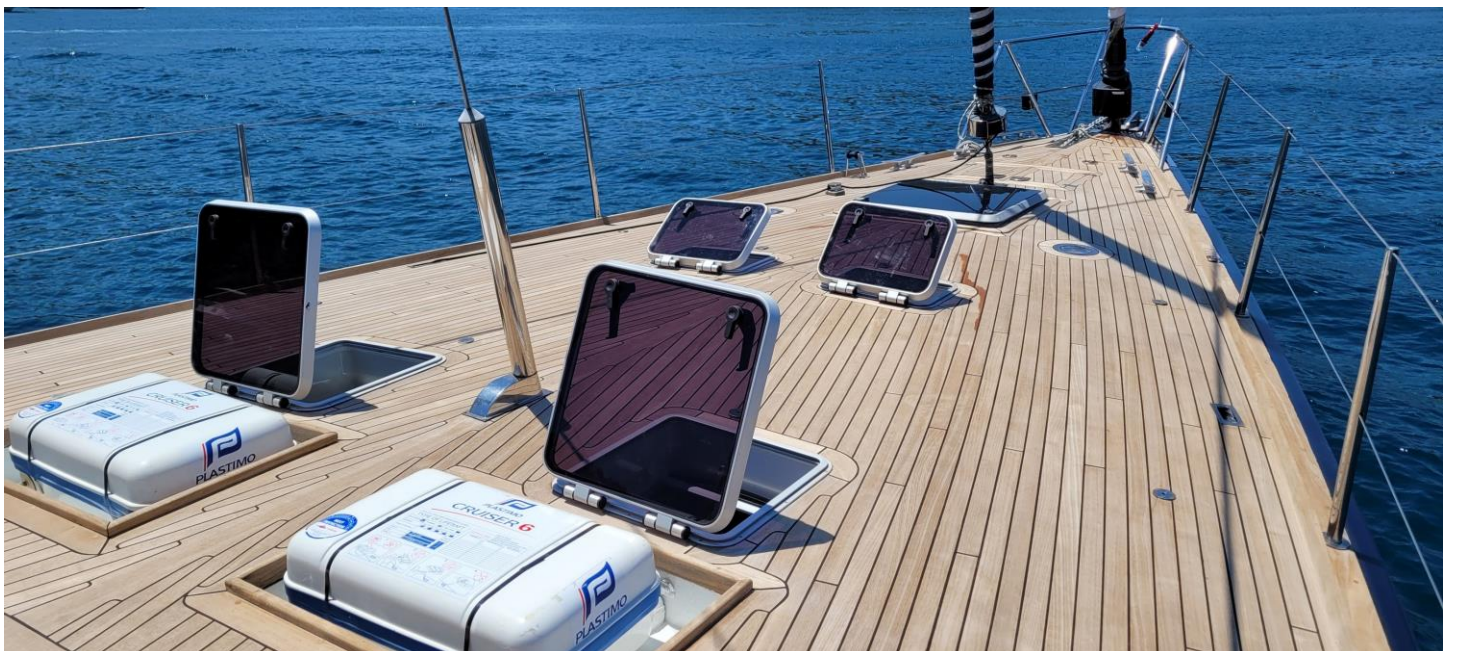
LAFOURCADE/YACHT BROKER

+33 680 593 873 - [o.lafourcade@yachtbroker.fr](mailto:o.lafourcade@yachtbroker.fr) - [www.yachtbroker.fr](http://www.yachtbroker.fr)



LAFOURCADE/YACHT BROKER

+33 680 593 873 - [o.lafourcade@yachtbroker.fr](mailto:o.lafourcade@yachtbroker.fr) - [www.yachtbroker.fr](http://www.yachtbroker.fr)



LAFOURCADE/YACHT BROKER

+33 680 593 873 - [o.lafourcade@yachtbroker.fr](mailto:o.lafourcade@yachtbroker.fr) - [www.yachtbroker.fr](http://www.yachtbroker.fr)



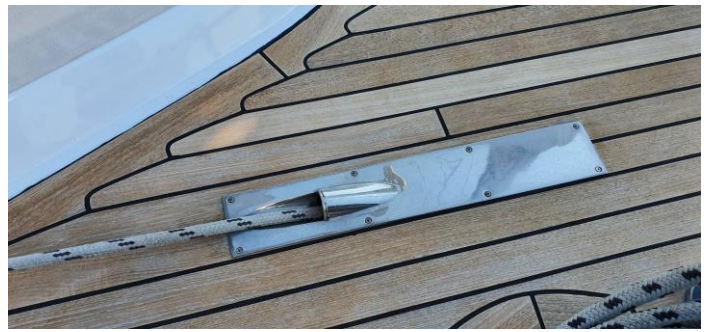
LAFOURCADE/YACHT BROKER

+33 680 593 873 - [o.lafourcade@yachtbroker.fr](mailto:o.lafourcade@yachtbroker.fr) - [www.yachtbroker.fr](http://www.yachtbroker.fr)



LAFOURCADE/YACHT BROKER

+33 680 593 873 - [o.lafourcade@yachtbroker.fr](mailto:o.lafourcade@yachtbroker.fr) - [www.yachtbroker.fr](http://www.yachtbroker.fr)



LAFOURCADE/YACHT BROKER

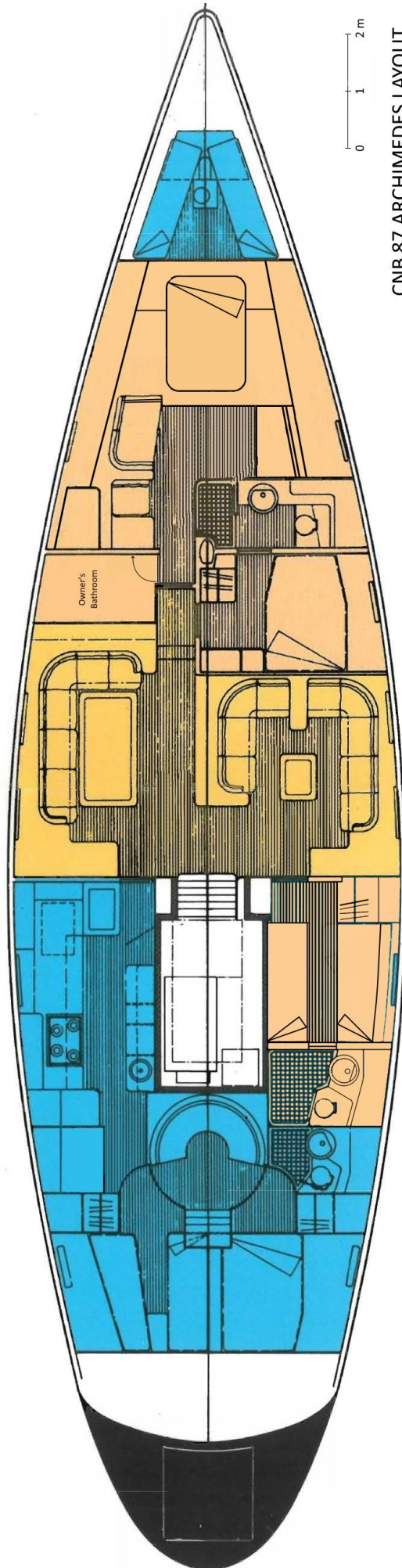
+33 680 593 873 - [o.lafourcade@yachtbroker.fr](mailto:o.lafourcade@yachtbroker.fr) - [www.yachtbroker.fr](http://www.yachtbroker.fr)





LAFOURCADE/YACHT BROKER

+33 680 593 873 - [o.lafourcade@yachtbroker.fr](mailto:o.lafourcade@yachtbroker.fr) - [www.yachtbroker.fr](http://www.yachtbroker.fr)



CNB 87 ARCHIMEDES LAYOUT



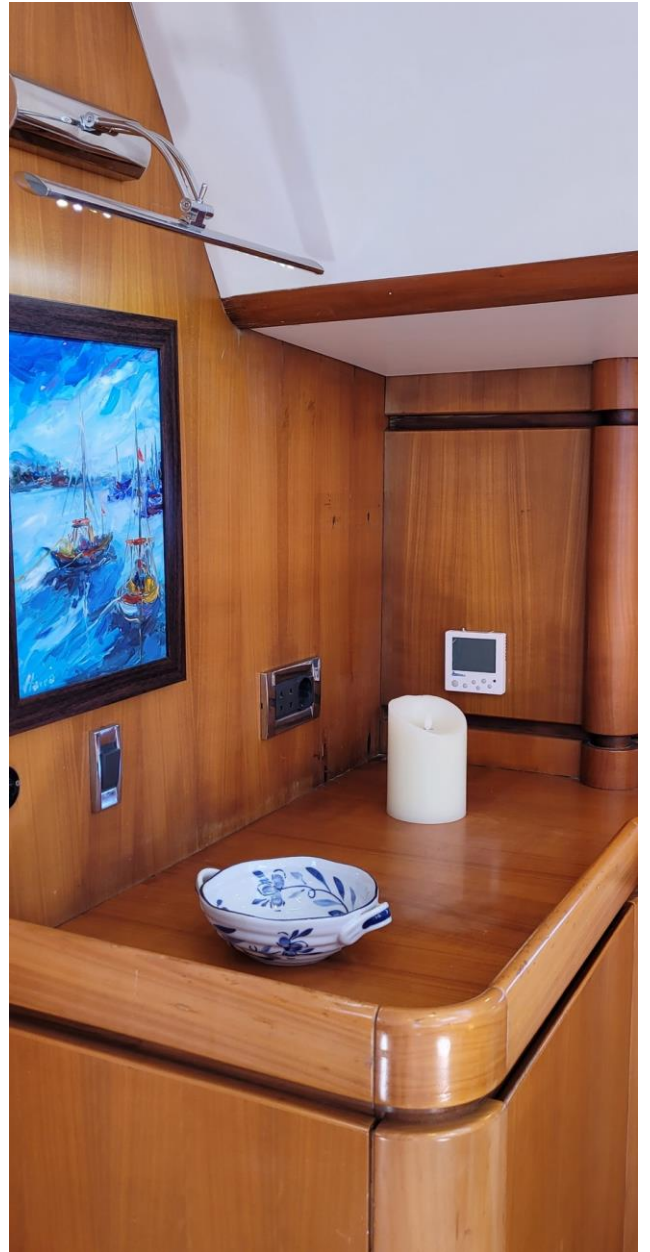
LAFOURCADE/YACHT BROKER

+33 680 593 873 - [o.lafourcade@yachtbroker.fr](mailto:o.lafourcade@yachtbroker.fr) - [www.yachtbroker.fr](http://www.yachtbroker.fr)



LAFOURCADE/YACHT BROKER

+33 680 593 873 - [o.lafourcade@yachtbroker.fr](mailto:o.lafourcade@yachtbroker.fr) - [www.yachtbroker.fr](http://www.yachtbroker.fr)



Salon details



LAFOURCADE/YACHT BROKER

+33 680 593 873 - [o.lafourcade@yachtbroker.fr](mailto:o.lafourcade@yachtbroker.fr) - [www.yachtbroker.fr](http://www.yachtbroker.fr)



Owner's cabin forward



Owner's cabin forward

**LAFOURCADE/YACHT BROKER**

+33 680 593 873 - [o.lafourcade@yachtbroker.fr](mailto:o.lafourcade@yachtbroker.fr) - [www.yachtbroker.fr](http://www.yachtbroker.fr)



Owner's cabin forward



Owner's bathroom



Owner's bathroom

**LAFOURCADE/YACHT BROKER**

+33 680 593 873 - [o.lafourcade@yachtbroker.fr](mailto:o.lafourcade@yachtbroker.fr) - [www.yachtbroker.fr](http://www.yachtbroker.fr)





Guest cabin starboard side forward



Guest cabin starboard side forward



Guest cabin starboard side midship



Crew cabin port side



Navigation room aft

**LAFURCADE/YACHT BROKER**

+33 680 593 873 - [o.lafourcade@yachtbroker.fr](mailto:o.lafourcade@yachtbroker.fr) - [www.yachtbroker.fr](http://www.yachtbroker.fr)



LAFOURCADE/YACHT BROKER

+33 680 593 873 - [o.lafourcade@yachtbroker.fr](mailto:o.lafourcade@yachtbroker.fr) - [www.yachtbroker.fr](http://www.yachtbroker.fr)



LAFOURCADE YACHT BROKER is acting as broker for the vendor who is not selling in the course of business unless otherwise stated. These details are prepared from information provided by the vendor and are intended only as a guide to give a fair description of the vessel but their accuracy cannot be guaranteed and they do not constitute part of any contract. A prospective buyer is strongly advised to check the particulars and to have the vessel fully surveyed by a qualified marine surveyor. Details are supplied on the understanding that all negotiations shall be through LAFOURCADE YACHT BROKER. This vessel is offered subject to prior sale, price change or withdrawal without notice.

**LAFOURCADE/YACHT BROKER**

+33 680 593 873 - [o.lafourcade@yachtbroker.fr](mailto:o.lafourcade@yachtbroker.fr) - [www.yachtbroker.fr](http://www.yachtbroker.fr)